



## The Rising Cost of Re-Sprays

VOLUME 29

Eliminating metal exposure in beer and beverage cans has always required constant vigilance. Just one spray machine incorrectly set will add a sprinkling of defective cans to the production output. Hopefully, these will be detected by the operator during enamel rating checks, but how soon? How many cans will need to be held? What will this cost?

Each time there is a metal exposure problem, cans will be held and will need to be scrapped, sorted or re-sprayed. All of these options carry significant costs, which are often hidden amongst general plant efficiency costs. But the costs are real. Disruption, extra labor, extra coatings, more spoilage, late deliveries all decrease the plant's efficiency - and all can be reduced if the frequency and quality of testing is improved.

A further concern is that re-sprayed cans may be of a lower quality. The additional handling and extra coatings all have their effects. Some fillers are suggesting that re-spraying causes off tastes and may in the future be banned. This will further increase the cost of inadequate testing, unless preventative action is taken.

In considering these issues you start to realise why Sencon's fully automatic enamel rater has been such a phenomenal success.

Can plants throughout Asia, the Middle East, Europe, North America and South America have turned to the automation of metal exposure tests. As production speeds have increased and internal coating weights reduced, the auto machines allow test frequencies, sample sizes and retest procedures to be upgraded to suit. The result is fewer cans with metal exposure reaching the warehouse.



The auto machines also remove the human bias, caused by operators that may fail to test the neck area and have even been known to filter defective cans from the test sample!

The Sencon Auto Enamel Rater has been refined over the last twelve years into a truly rugged, reliable unit. All of our customers come back for more and there are now over 150 of our Auto Enamel Raters cutting customers costs around the world.

## In this issue

..Page 1  
The Rising Cost  
of Re-Sprays

.. Page 2  
End-Counting with  
99.998% Accuracy

Aerosol and Tube  
Coating Thickness Testing

.. Page 3  
Reliable, Durable, Error  
Free End Enamel Rating

Pin Oven Logging  
Gets Easier

..Page 4  
In Brief

For more information about  
Automatic Enamel Rating,  
tick the box on the reply sheet

News & Views is published by:

**SENCON**  
CONTROL DOWN THE LINE



# Sencon End-Counting: 99.998% Accuracy ~ 1% of the Changeover Time

Packed tightly, in quickly moving sticks, beverage ends are notoriously difficult to count accurately. Miscounting by one or two ends per bag can quickly add up to a major under or over supply of ends.

Standard optical sensors have difficulty finding gaps in the densely stacked line of ends, and while friction wheels, or gear-teeth in the shape of the curl profile work reasonably well they can over count when the end stick shakes, jiggles or reverses, resulting in under supply.

For end makers who regularly vary the bag quantities, friction wheels have the additional disadvantage of long changeover time, during which the wheels must be manually removed and replaced, halting production for valuable hours.

Sencon's two unrivalled End Counters are finely tuned sensors that truly meet the challenge of optical end counting. They are designed especially and solely for finding the tiny dips between the curls on every end, with a

custom-built microchip and dual sensor technique. This dual detection allows each Counter to sense the direction of flow and ignore ends that are shaking, jiggling or reversing, going a long way towards solving the problems of miscounting.



Conservative count accuracies of 30 per 1,000,000 are quoted but actual accuracies achieved by users are often much higher.

For general production counting the End Counter 11-392-66 uses a divide-by-ten function, especially useful on very fast lines. It gives a count output for every ten ends which are counted, giving

the control PLC more time to accept each count.

For end splitting applications the alternate End Counter 11S-391-66 provides a splitter synchronisation output and a count signal for every end that goes by, making it suitable for precision packing. For end makers who vary their bag count quantity by replacing friction wheels, the 11S-391-66 Counter also reduces changeover time from hours to moments. Instead of re-fitting mechanical change parts, varying the fill quantity is as simple as digitally entering a new number on the existing bagging control system.

Moving to Sencon digital counting removes the need for mechanical friction wheels, speeds up bag size changeovers, significantly combats miscounts from shaking, back ups and shunts, and is specially designed for optimal accuracy.

For more information about the Beverage End Count Sensor, tick the box on the reply sheet

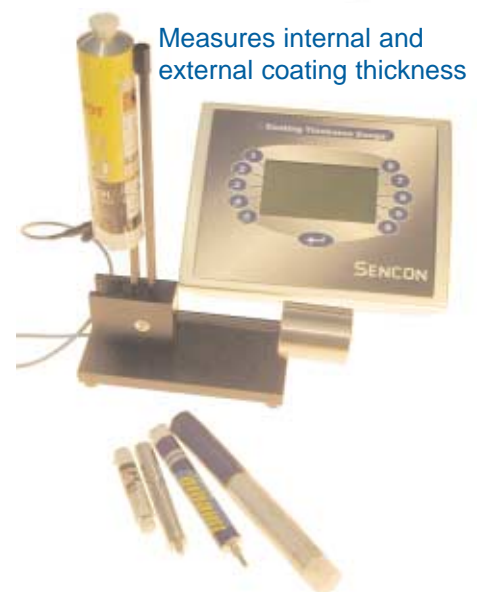
## Aerosol and Tube Coating Thickness Testing



Carbon fibre probe arms are very strong yet have a narrow cross section

Measuring the coating thickness in small diameter cans or tubes has been a problem primarily due to the probe tip's surface area needing to be of a fair size in order to give accurate measurements.

The latest gauge from Sencon can reliably operate with a much smaller probe tip surface area, granting the opportunity to work with small diameter cans or tubes. The new can probe has been made smaller to allow the probe arms to reach inside most of the common tube sizes.



Measures internal and external coating thickness

Counterbalance weight applies a constant pressure to the probe tip

For more information about the Aerosol can probe, tick the box on the reply sheet

# Reliable, Durable, Error Free End Enamel Rating



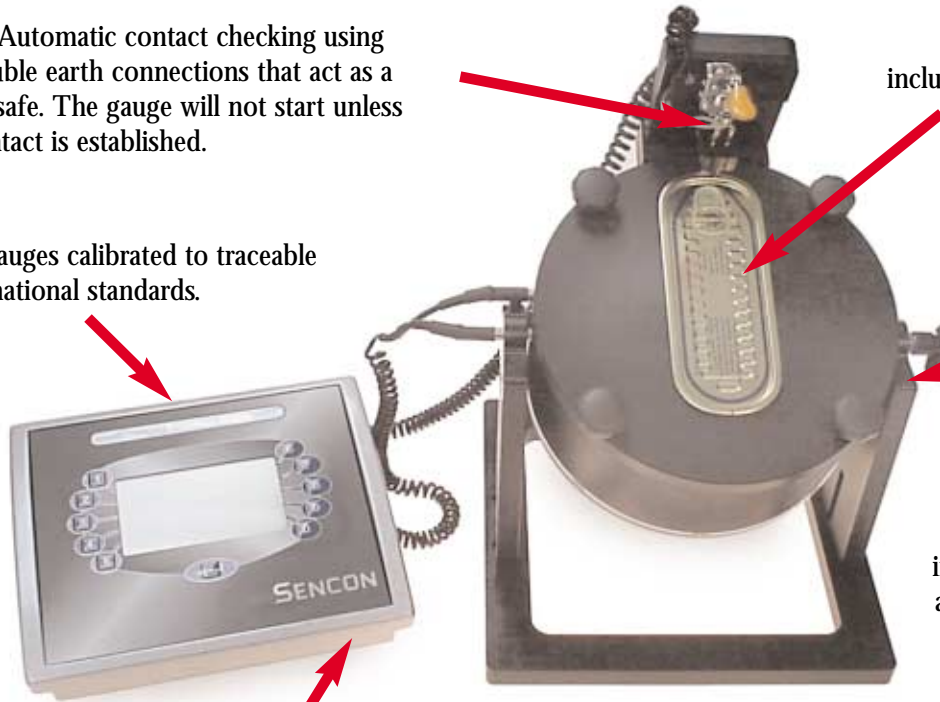
Just one overlooked fault in your end enamel rating system can result in missed metal exposure, and expensive customer complaints. Does your current enamel rater give you all these benefits...?

Automatic contact checking using double earth connections that act as a failsafe. The gauge will not start unless contact is established.

Most sizes of ends catered for, including rectangular ends, by replacing a single change part.

Gauges calibrated to traceable international standards.

Improved durability, with greater top-plate security, new end stop pins, and a quick-fit cable connections.



Semi-automatic gauge operation removes the need to press buttons during a test batch.

The SI9100 Gauge and the improved Ends Adapter from Sencon are the best combination available for increasing accuracy, and reducing the risk of measurement error.

For more information about the SI9020 End Enamel Rater adaptor, tick the box on the reply sheet



## Pin Oven Logging Gets Easier

Recording the cure profile of Pin ovens has always been difficult. The limited space, high speed, and short duration of the typical Pin oven has meant that little or no measurement could be done.

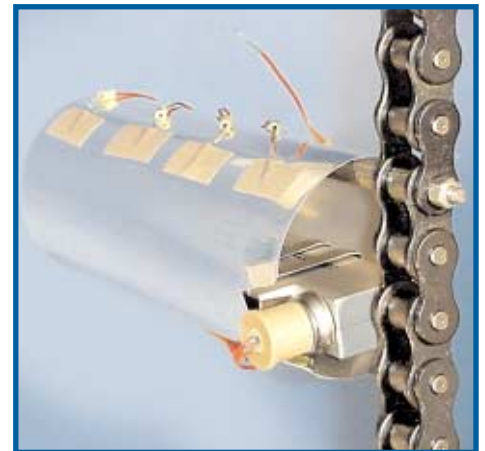
Sencon have announced a new and ingenious way of using their standard IBO oven profile logger mounted inside a normal can. This new package allows users to simply place the logger and can package on to the pin chain without any delay or modification to the oven.

Cure profiles can now be recorded on a regular basis, giving a detailed picture of the oven's performance over

time. Discrepancies in performance can be recognised more rapidly and with greater accuracy, resulting in a reduced risk of HFI, scrap, or customer complaint.

A video CD demonstration of the logger in action is available from Sencon.

Sencon also have an improved version of the oven analysis software "Hexagon", which is available for all current users of Sencon loggers.



For more information about the Pin Oven Logger, tick the box on the reply sheet

To receive the update to the Hexagon software, contact Sencon at the relevant address, overleaf

## New Product Catalog

### Dual Software for Coatings Gauge

The SI9600 coatings thickness gauge has been available with several different versions of user interface. To make it easier to choose the best interface for a particular situation, the latest gauges are being supplied with dual interface software. This allows users to easily switch between the icon based or text based operator interfaces.

**Cannex returns to the USA  
from 26 - 28 May 2004  
at The Colorado Convention  
Centre, Colorado**



We look forward to seeing you at Cannex in Denver from 26 - 28 May 2004.

As always Cannex represents a great opportunity to discuss all the latest Sencon productivity and quality assurance solutions now available.

Sencon are pleased to announce the release of its new product catalog.

The catalog lists all of Sencon's regular products along with a number of new releases. Finding products has been simplified with additional index pages and even more product information.

This version of our catalog has been produced in two formats, the traditional hardcopy book and a CD based version.

The CD version offers a lot more than just a catalog. It contains the electronic version of the catalog with it's own active index and hotlinks direct to product pages. Also...

- A complete version of the Sencon web site in 5 languages.
- The very popular interactive Sensor selection guide.
- Training information on the intricacies of coating viscosity control.
- A 30 day trial version of the SPC application for Advanced Process Control.



The catalog on CD, with a user-friendly interface and packed with features

To receive your copy of the disc or paper version, please tick the appropriate box on the reply form

## New Quick Reference Icons

You may have noticed the small images of cans and ends, next to the article titles. These have been designed to highlight which canmaking discipline the article is of direct value to. As always Sencon are trying to make life easier.



**NORTH & SOUTH AMERICA**  
Sencon Incorporated,  
6385 W. 74th Street,  
Bedford Park, IL 60638, USA.  
Telephone: +1 708 496 3100  
Fax: +1 708 496 3105  
Email: sales@sencon.com

[www.sencon.com](http://www.sencon.com)

**EUROPE • MIDDLE EAST • ASIA**  
Sencon (UK) Limited,  
Unit P, Blackpole Trading Estate,  
Worcester WR3 8SG, United Kingdom.  
Telephone: +44 1905 755525  
Fax: +44 1905 456393  
Email: sales@sencon.co.uk

[www.sencon.net](http://www.sencon.net)

**FRANCE - SPAIN**  
Parc Club Bât.21  
1025, rue Henri Becquerel  
34036 Montpellier, Cedex 01, France  
Tél: +33 4 99 13 37 20  
Fax: +33 4 99 13 37 21  
Email: france: sales@sencon.fr  
Spain: sales@sencon.es

[www.sencon.fr](http://www.sencon.fr)